

Session 1

CMHDARN Research Forum Opening
NSW Mental Health Commissioner
John Feneley

Facilitator - Larry Pierce, CEO NADA

COMMUNITY MENTAL HEALTH DRUG AND ALCOHOL RESEARCH NETWORK FORUM

John Feneley
Commissioner

November 2013



Mental Health Commission
of New South Wales

NSW Mental Health Commission

- NSW Mental Health Commission established July 2012 as an independent statutory body
- Tasked to develop a whole-of-government draft Strategic Plan for Mental Health in NSW to provide to Government in March 2014
- Publications: *Living Well in Our Community and Journeys - towards a draft Strategic Plan*

Deputy Commissioners

Appointed March 2013



Bradley Foxlewin



Dr Robyn Shields



Professor Alan Rosen



Fay Jackson

Community Advisory Council

- The Advisory Council consists of the Commissioner and fifteen other members and is representative of the diversity of NSW community
- Its function is to advise the Commission on any mental health issue it considers appropriate or that is referred to it by the Commission

Mental Health Commission Act

- ◎ Primary objective is to monitor, review and improve the mental health system and the mental health and well-being of the people of NSW

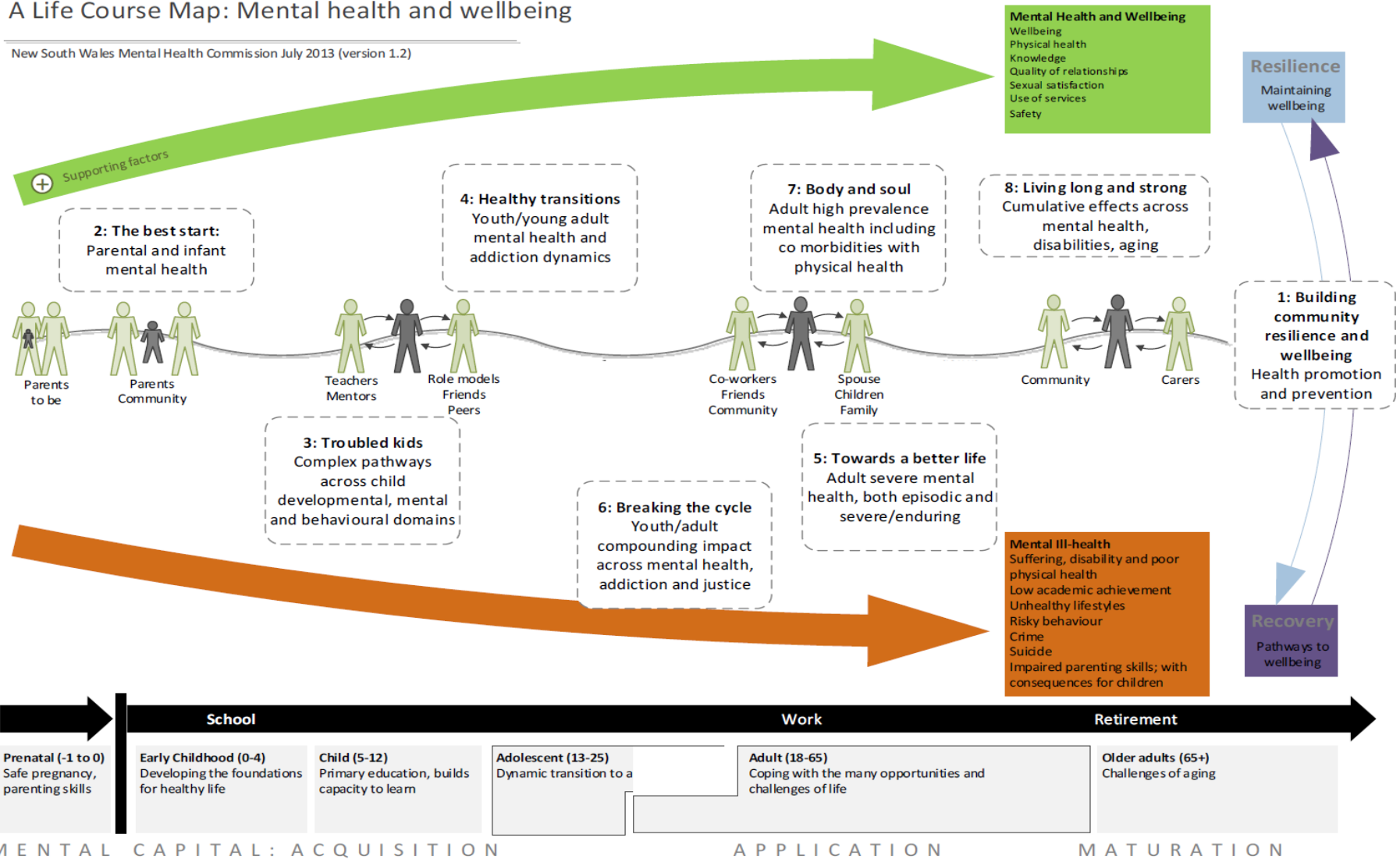
Commission Functions

- ① Prepare a draft strategic plan
- ① Monitor and report on its implementation
- ① Review, evaluate, report and advise on services and programs

Life Journeys

A Life Course Map: Mental health and wellbeing

New South Wales Mental Health Commission July 2013 (version 1.2)



Commission & Research

- Commission's functions include:
 - Promote and facilitate the sharing of knowledge and ideas
 - Undertake and commission research, innovation and policy development
- Not a fund holder for Research but considering some key strategic research projects to support Strategic Plan.

Commission & Research

- Requested to develop a Research Framework for Mental Health Research across NSW Government.
- Initial round consultation with key Mental Health Research Centres completed October 2013.

Research Framework

- Build on strength of CREs (*Early Intervention, Suicide Prevention, MH&DA*)
- NSW to be an attractor of research funding
- Develop & Strengthen consumer led research
- Develop & Strengthen Research-practitioner career pathways
- Focus on translational research
- Strengthen networks and knowledge dissemination

Community Mental Health Drug and Alcohol Research Network

Commission proud to support for
next 12 months

Thank You



Mental Health Commission
of New South Wales